



YAMAHA SCARA ROBOT

LOW COST HIGH PERFORMANCE MODEL

YK400XR *THB 348,000**

*VAT excluded set price of robot+cable+controller (Type:YK400XR-S-150-3L-RCX340-4-NS-4), options such as teaching box, PC software are not included.

New SCARA robot YK400XR gives high quality and high performance and yet lowest price

Shortest Cycle Time in this class

A standard cycle time of 0.45 sec. is achieved by drawing out the robot performance to its maximum level.

Superior Cost Performance

Most economical price in YAMAHA's similar robot class without sacrificing its existing features.

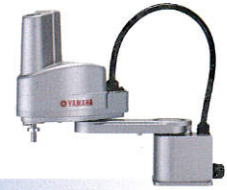
With Versatile and High Performance Controller RCX340

Combination of YK400XR robot and new RCX340 controller enable operation up to 16 axes with simple easy networking.

YK400XR

Standard type: Small type

● LOW COST HIGH PERFORMANCE MODEL



● Arm length 400mm ● Maximum payload 3kg

Ordering method

YK400XR		150		RCX340-4								
Model	Return-to-origin method S: Sensor T: Stroke end	Z axis stroke	Hollow shaft No entry: None S: With hollow shaft	Cable 3L: 3.5m 5L: 5m 10L: 10m	Controller / Number of controllable axes	Safety standard	Option A (OP.A)	Option B (OP.B)	Option C (OP.C)	Option D (OP.D)	Option E (OP.E)	Absolute battery 4: 4 pcs. 3: 3 pcs. 2: 2 pcs. 1: 1 pc. 0: 0 pc.

Note. For details about controller, refer to the RCX340 catalog or view YAMAHA's website.

Specifications

Axis specifications		X-axis	Y-axis	Z-axis	R-axis
Arm length (mm)		225	175	150	-
Rotation angle (°)		+/-132	+/-150	-	+/-360
AC servo motor output (W)		200	100	100	100
Deceleration mechanism	Speed reducer	Harmonic drive	Harmonic drive	Ball screw	Belt speed reduction
	Transmission method	Direct-coupled	Direct-coupled		Timing belt
Repeatability ^{Note 1} (XYZ: mm) (R: °)	Motor to speed reducer				
	Speed reducer to output				
Maximum speed (XYZ: m/sec) (R: °/sec)		+/-0.01		+/-0.01	+/-0.01
Maximum payload (kg)		3 (Standard specification), 2 (Option specifications ^{Note 4})			
Standard cycle time: with 2kg payload ^{Note 2} (sec)		0.45			
R-axis tolerable moment of inertia ^{Note 3} (kgm ²)		0.05kgm ² (0.5kgfcm ²)			
User wiring (sq × wires)		0.2 × 10			
User tubing (Outer diameter)		φ4 × 3			
Travel limit		1.Soft limit 2.Mechanical stopper (X,Y,Z axis)			
Robot cable length (m)		Standard: 3.5 Option: 5,10			
Weight (kg)		17			

Note 1. This is the value at a constant ambient temperature. (X,Y axes)

Note 2. When reciprocating 300mm in horizontal and 25mm in vertical directions and performing the coarse positioning arch operation.

Note 3. It is necessary to input the moment of inertia in the actual operating environment.

Note 4. Maximum payload of option specifications (with user wiring/tubing through spline type) is 2kg.

Controller

Controller	Power capacity (VA)	Operation method
RCX340	1000	Programming / Remote command / Operation using RS-232C communication

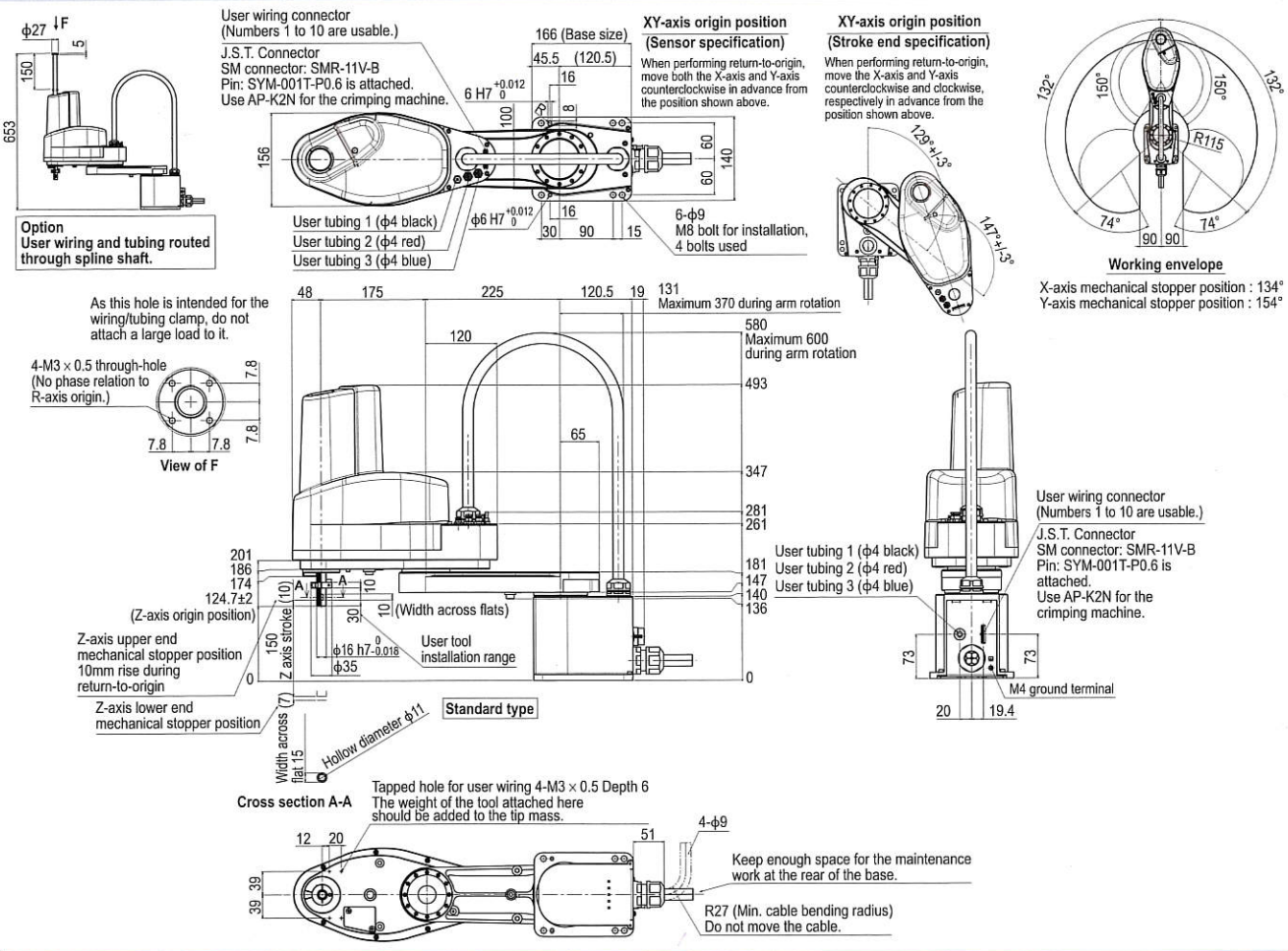
Note. "Harmonic" and "Harmonic drive" are the registered trademarks of Harmonic Drive Systems Inc.

Note. The movement range can be restricted by adding the X- and Y-axis mechanical stoppers. (The maximum movement range was set at shipment.) See our robot manuals (installation manuals) for detailed information.

Note. To set the standard coordinates with high accuracy, use a standard coordinate setting jig (option). Refer to the user's manual (installation manual) for more details.

Our robot manuals (installation manuals) can be downloaded from our website at the address below:
<http://global.yamaha-motor.com/business/robot/>

YK400XR



IM Operations

882 Soude, Naka-ku, Hamamatsu, Shizuoka 435-0054, Japan
Tel 81-53-460-6103 Fax 81-53-460-6811

URL <http://global.yamaha-motor.com/business/robot/>

E-mail robotn@yamaha-motor.co.jp

● Specifications and appearance are subject to change without prior notice.

201407-AE