

STH04

Slide table type

- CE compliance
- Origin on the non-motor side is selectable

Ordering method

STH04							S2		
Model	Lead	Model	Brake ^{Note 1}	Origin position	Bracket plate ^{Note 2}	Stroke	Cable length ^{Note 3}	Controller	I/O selection
	05: 5mm 10: 10mm	S: Straight model R: Space-saving model (motor installed on right) L: Space-saving model (motor installed on left)	N: With no brake B: With brake	N: Standard Z: Non-motor side	N: No plate H: With plate	50: 50mm 100: 100mm	1L: 1m 3L: 3m 5L: 5m 10L: 10m	S2: TS-S2	NP: NPN PN: PNP CC: CC-Link DN: DeviceNet EP: EtherNet/IP ^{Note 4}

Note 1. For the space saving models (R and L), the specifications with brake are applicable to only 100mm strokes.

Note 2. Space-saving models (R, L) with the plate cannot be selected.

Note 3. The robot cable is flexible and resists bending.

Note 4. EtherNet/IP will be supported from August, 2013.

Basic specifications

Motor	28 □ Step motor		
Resolution (Pulse/rotation)	4096		
Repeatability ^{Note 1} (mm)	+/- 0.05		
Drive method	Straight	Slide screw	
	Space-saving	Slide screw + belt	
Ball screw lead (mm)	5	10	
Maximum speed ^{Note 2} (mm/sec)	200	400	
Maximum payload (kg)	Horizontal	6	
	Vertical	2	
Max. pressing force (N)	55	30	
	Stroke (mm)	50/100	
Maximum outside dimension of body cross-section (mm)	Straight	W45 × H46	
	Space-saving	W74.5 × H51	
Cable length (m)	Standard: 1 / Option: 3, 5, 10		

Note 1. Positioning repeatability in one direction.

Note 2. The speed may vary depending on the payload. Check the "Speed vs. payload" graph (reference).

Allowable overhang ^{Note}

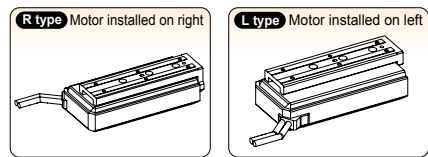
Horizontal installation (Unit: mm)		Wall installation (Unit: mm)		Vertical installation (Unit: mm)								
	A	B	C	A	C							
Lead 10	2kg	1534	611	415	2kg	435	595	1504	Lead 10	0.5kg	2000	2000
	3kg	949	374	255	3kg	263	359	920		0.75kg	1558	1558
	4kg	656	255	175	4kg	177	241	629		1kg	1165	1164
Lead 5	2kg	1534	611	415	2kg	435	595	1504	Lead 5	1kg	1165	1164
	4kg	656	255	175	4kg	177	241	629		1.5kg	771	771
	6kg	364	137	95	6kg	91	123	337		2kg	574	574

Note. Overhang at travelling service life of 3000km. (Service life is calculated for 75mm stroke models.)

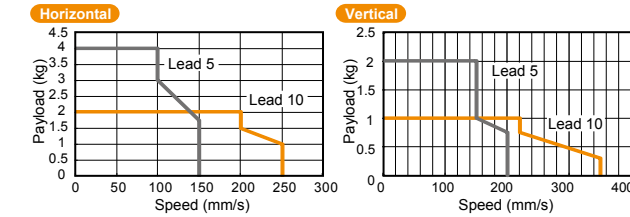
Static loading moment

(Unit: N·m)			
Stroke	MY	MP	MR
50mm	26	26	48
100mm	43	43	

Motor installation (Space-saving model)



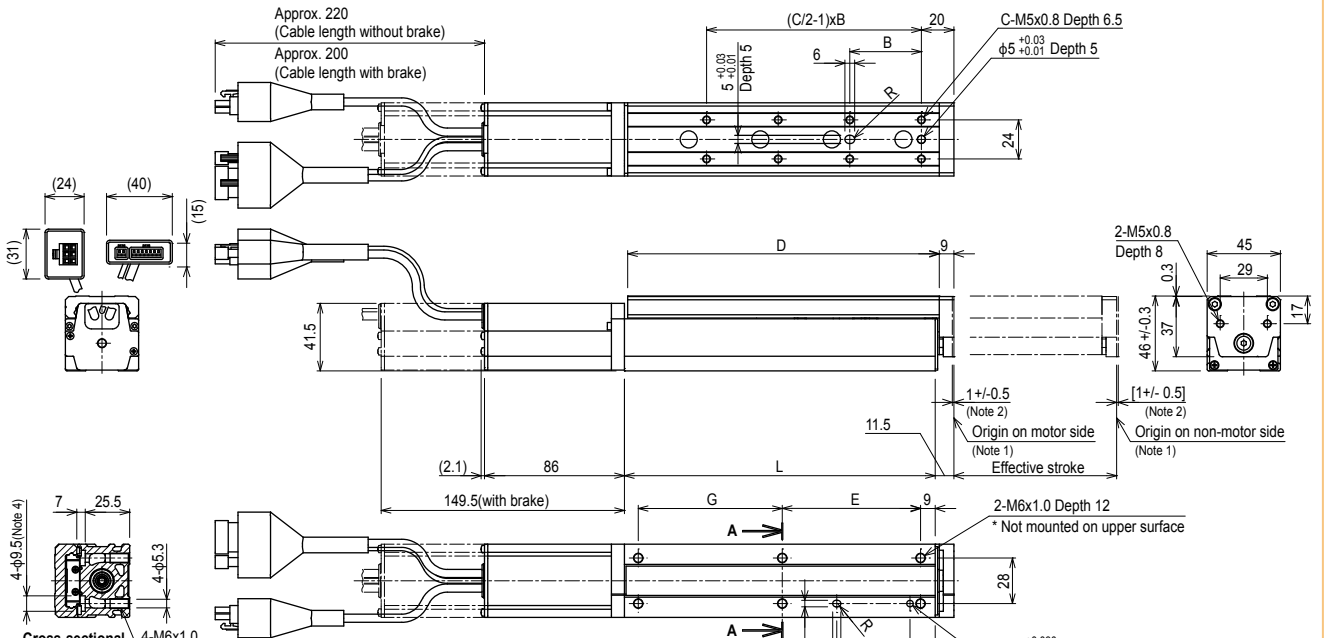
Speed vs. payload



Controller

Controller	Operation method
TS-S2	I/O point trace / Remote command

STH04 Straight model S



Effective stroke	50	100
B	40	44
C	6	8
D	116.5	191.5
E	65	85
G	39.5	88.5
L	122	191
Weight (kg) ^{Note 6}	1.25	1.7

Note1. Return-to-origin position.

Note2. Table movable range during return-to-origin operation. The values in [] show those when the return-to-origin direction is changed.

Note3. The minimum bending radius of the motor cable is R30.

Note4. When installing the mechanical main unit using the back facing holes, use the hex socket head cap M5 bolts.

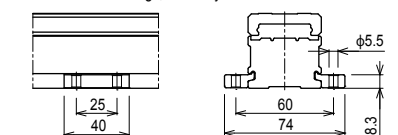
Note5. The installation hole positions of the main unit with the specifications with the brake are common to those shown above.

Note6. Models with a brake will be 0.11kg heavier.

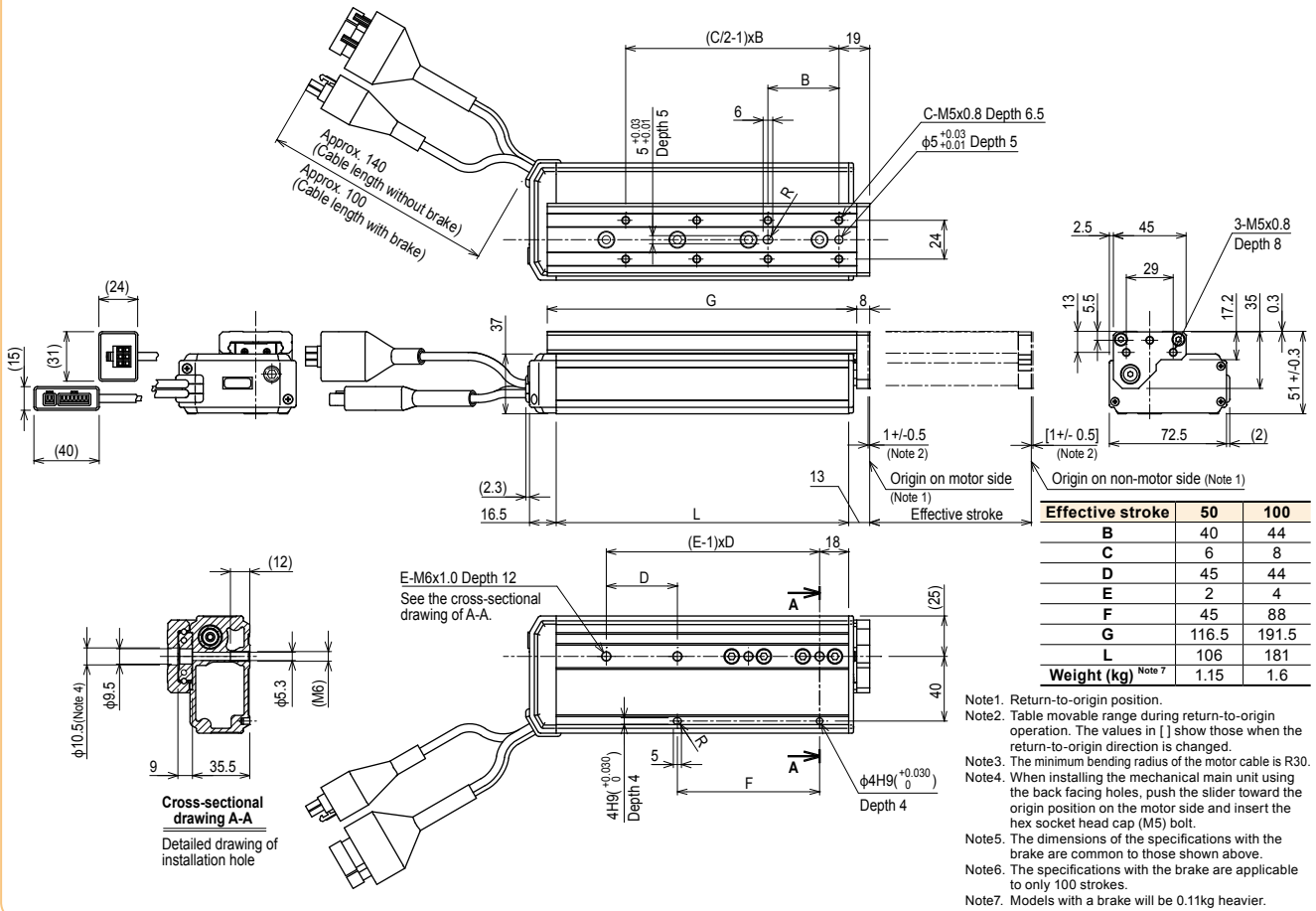
Option: Installation plate

Contents of option: Plate, 4 pcs.

* For additional settings, contact your distributor.



STH04 Space-saving model (motor installed on right) **R**



STH04 Space-saving model (motor installed on left) **L**

