

STH06

Slide table type



- CE compliance
- Origin on the non-motor side is selectable

Ordering method

STH06										S2			
Model	Lead 08: 8mm 16: 16mm	Model S: Straight model R: Space-saving model (motor installed on right) L: Space-saving model (motor installed on left)	Brake N: With no brake B: With brake	Origin position N: Standard Z: Non-motor side	Bracket plate Note 1 N: No plate H: With plate	Stroke 50: 50mm 100: 100mm 150: 150mm	Cable length Note 2 1L: 1m 3L: 3m 5L: 5m 10L: 10m	Controller S2: TS-S2	I/O selection NP: NPN PN: PNP CC: CC-Link DN: DeviceNet EP: EtherNet/IP Note 3				

Note 1. Space-saving models (R, L) with the plate cannot be selected.
 Note 2. The robot cable is flexible and resists bending.
 Note 3. EtherNet/IP will be supported from August, 2013.

Basic specifications

Motor	42 □ Step motor	
Resolution (Pulse/rotation)	20480	
Repeatability Note 1 (mm)	+/- 0.05	
Drive method	Straight	Slide screw
	Space-saving	Slide screw + belt
Ball screw lead (mm)	8	16
Maximum speed Note 2 (mm/sec)	150	400
	Maximum payload	Horizontal: 9, 6 Vertical: 4, 2
Max. pressing force (N)	180, 100	
Stroke (mm)	50/100/150	
Maximum outside dimension of body cross-section (mm)	Straight	W61 × H65
	Space-saving	W108 × H70
Cable length (m)	Standard: 1 / Option: 3, 5, 10	

Note 1. Positioning repeatability in one direction.
 Note 2. The speed may vary depending on the payload. Check the "Speed vs. payload" graph (reference).

Allowable overhang

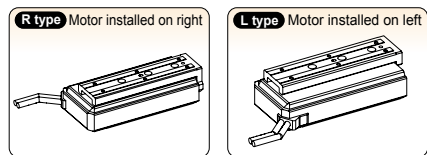
Lead	Horizontal installation (Unit: mm)			Wall installation (Unit: mm)			Vertical installation (Unit: mm)		
	A	B	C	A	B	C	A	C	
Lead 16	2kg	3000	2123	1500	2091	3000	1kg	3000	3000
	4kg	2493	1001	710	975	2443	1.5kg	2458	2457
	6kg	1571	627	440	603	1524	2kg	1837	1837
Lead 8	3kg	3000	1375	979	1347	3000	2kg	1837	1837
	6kg	1571	627	440	603	1524	3kg	1217	1216
	9kg	956	378	260	355	912	4kg	907	906

Note. Overhang at travelling service life of 3000km.
 (Service life is calculated for 100mm stroke models.)

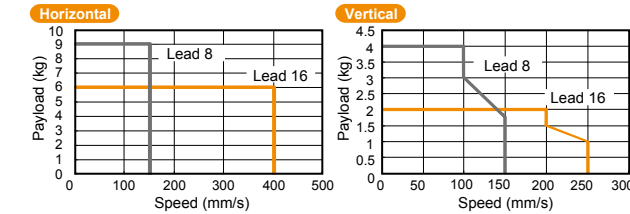
Static loading moment

Stroke	(Unit: N-m)			
	MY	MP	MR	
50mm	77	77	146	
100mm	112	112	177	
150mm	155	155	152	

Motor installation (Space-saving model)



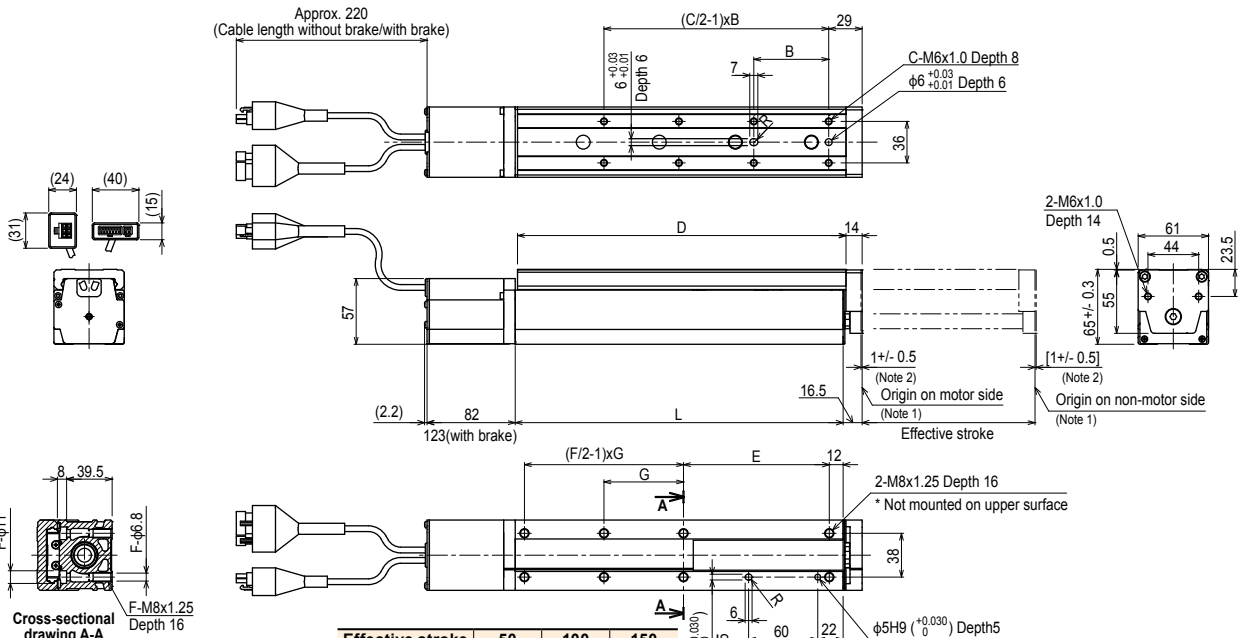
Speed vs. payload



Controller

Controller	Operation method
TS-S2	I/O point trace / Remote command

STH06 Straight model S

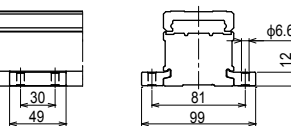


Cross-sectional drawing A-A

Detailed drawing of installation hole

Option: Installation plate

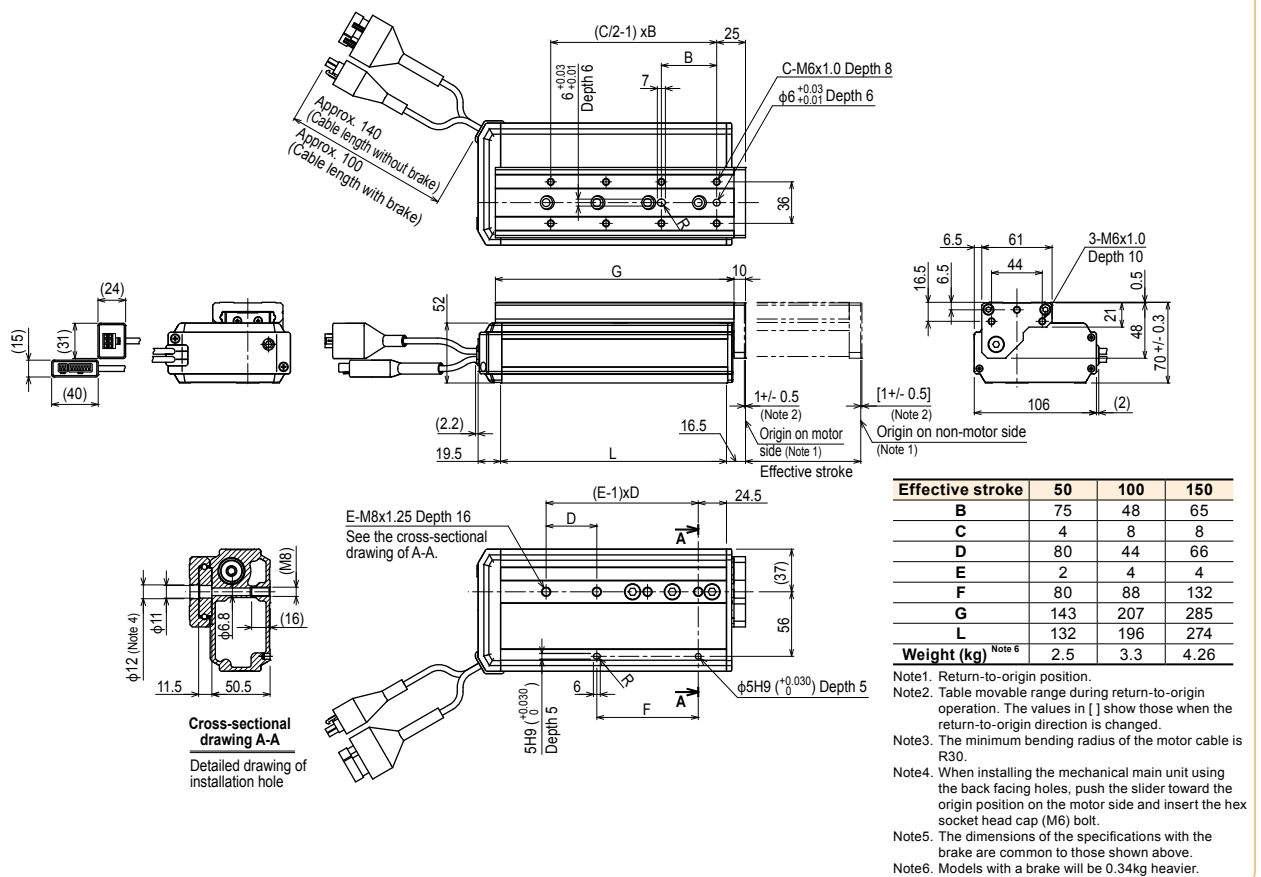
Contents of option: Plate, 4 pcs.
 * For additional settings, contact your distributor.



Effective stroke	50	100	150
B	75	48	65
C	4	8	8
D	143	207	285
E	84	98.5	126.5
F	4	4	6
G	40.5	88	69
L	144.5	206.5	284.5
Weight (kg) Note 6	2.52	3.27	3.6

Note1. Return-to-origin position.
 Note2. Table movable range during return-to-origin operation. The values in [] show those when the return-to-origin direction is changed.
 Note3. The minimum bending radius of the motor cable is R30.
 Note4. When installing the mechanical main unit using the back facing holes, use the hex socket head cap M6 bolts.
 Note5. The installation hole positions of the main unit with the specifications with the brake are common to those shown above.
 Note6. Models with a brake will be 0.34kg heavier.

STH06 Space-saving model (motor installed on right) **R**



STH06 Space-saving model (motor installed on left) **L**

