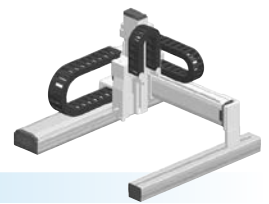


● Gantry type

● Cable carrier

● Z-axis: clamped base / moving table type (200W)+R-axis



### Ordering method

<b>MXYx - C</b>							<b>RCX340-4</b>									
<b>Model</b>	<b>Cable</b>	<b>Combination</b>	<b>X-axis stroke</b>	<b>Y-axis stroke</b>	<b>ZR-axis</b>	<b>Z-axis stroke</b>	<b>Controller / Number of controllable axes</b>	<b>Safety standard</b>	<b>Option A (OP.A)</b>	<b>Option B (OP.B)</b>	<b>Option C (OP.C)</b>	<b>Option D (OP.D)</b>	<b>Option E (OP.E)</b>	<b>Absolute battery</b>		
G1		G1	25 to 125cm	15 to 85cm	ZRFL20	15 to 35cm										
G2		G2			ZRFL10											
G3		G3														
G4		G4														

Specify various controller setting items. RCX340 ▶ **P678**

### Specification

	X-axis	Y-axis	Z-axis: ZRFL20	Z-axis: ZRFL10	R-axis
<b>Axis construction</b> <sup>Note 1</sup>	F17	F14H	F10H-BK		R5
<b>AC servo motor output (W)</b>	400	200	200		50
<b>Repeatability</b> <sup>Note 2</sup> (XYZ: mm)(R: °)	+/-0.01	+/-0.01	+/-0.01		+/-0.0083
<b>Drive system</b>	Ball screw φ20	Ball screw φ15	Ball screw φ15		Harmonic gear
<b>Ball screw lead</b> <sup>Note 3</sup> (Deceleration ratio) (mm)	20	20	20	10	(1/50)
<b>Maximum speed</b> <sup>Note 4</sup> (XYZ: mm/sec) (R: °/sec)	1200	1200	1200	600	360
<b>Moving range (XYZ: mm)(R: °)</b>	250 to 1250	150 to 850	150 to 350		360
<b>Robot cable length (m)</b>	Standard: 3.5 Option: 5, 10				

Note. The standard types are ZRFL with higher rigidity as compared with ZRF types which are conventional standard types. When you need the ZRF type, please consult YAMAHA.

Note 1. Use caution that the flame machining (installation holes, tap holes) differs from single-axis robots.

Note 2. Positioning repeatability in one direction.

Note 3. Leads not listed in the catalog are also available. Contact us for details.

Note 4. When the X-axis stroke is longer than 850mm (750mm for Y-axis), resonance of the ball screw may occur depending on the operation conditions (critical speed). In this case, reduce the speed setting on the program by referring to the maximum speeds shown in the table below.

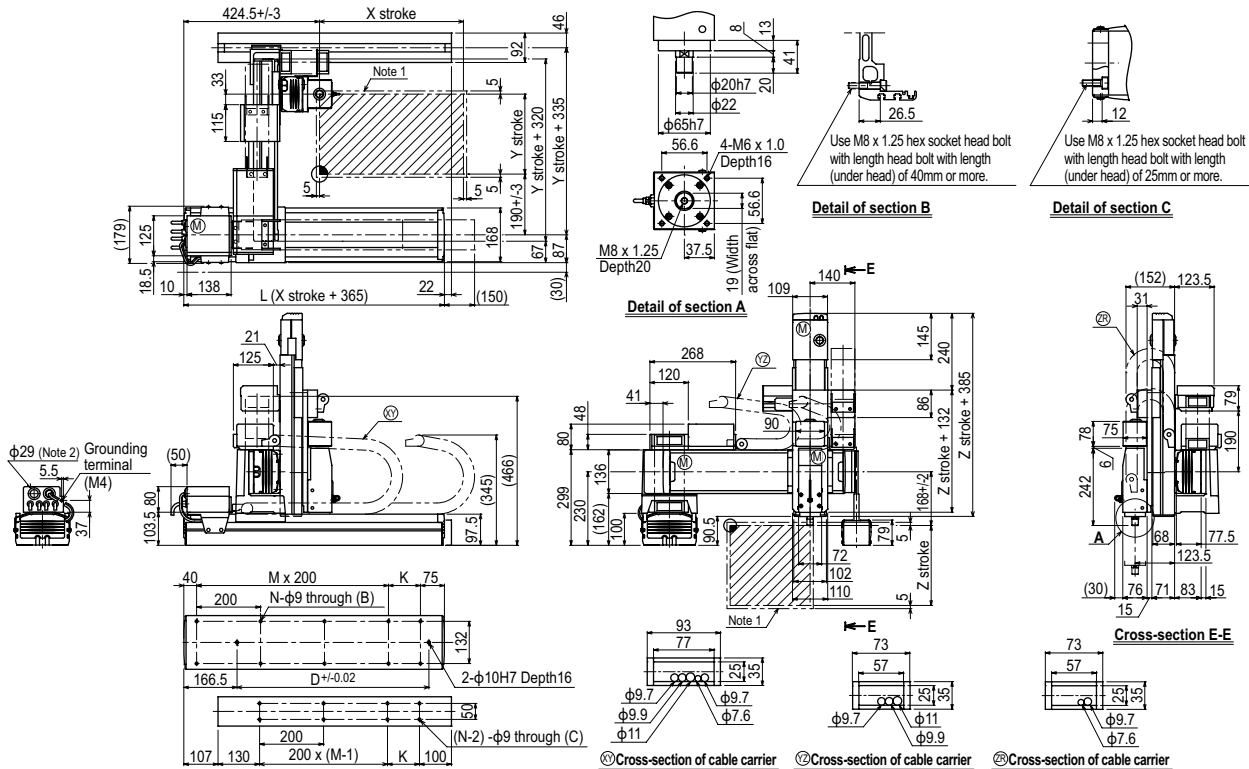
### Maximum payload (kg)

Y stroke (mm)	Z stroke (mm)					
	ZRFL20			ZRFL10		
150	4	4	4	11	11	11
250	4	4	4	11	11	11
350	4	4	4	11	11	11
450	4	4	4	11	11	11
550	4	4	4	11	11	11
650	4	4	4	11	11	11
750	4	4	4	11	11	11
850	4	4	4	8	7	6

### Controller

Controller	Operation method
RCX340	Programming / I/O point trace / Remote command / Operation using RS-232C communication

### MXYx 4 axes / ZRFL20/10 (G1)



X stroke	250	350	450	550	650	750	850	950	1050	1150	1250	
	L	615	715	815	915	1015	1115	1215	1315	1415	1515	1615
K	100	200	100	200	100	200	100	200	100	200	100	
D	240	420	600	600	780	780	960	960	1140	1140	1320	
M	2	2	3	3	4	4	5	5	6	6	7	
N	8	8	10	10	12	12	14	14	16	16	18	
Y stroke	150	250	350	450	550	650	750	850				
Z stroke	150	250	350									
Maximum speed for each stroke (mm/sec) <sup>Note 3</sup>	X-axis	1200					960	840	720	600	480	
	Speed setting	-					80%	70%	60%	50%	40%	
	Y-axis	1200					960	780				
Speed setting	-					80%	65%					

Note 1. The moving range when returning to origin and the stop position when stopping by the mechanical stopper.

Note 2. User cable extraction port.

Note 3. When the X-axis stroke is longer than 850mm (750mm for Y-axis), resonance of the ball screw may occur depending on the operation conditions (critical speed). In this case, reduce the speed setting on the program by referring to the maximum speeds shown in the table at the left.

Articulated robots  
YA

Linear conveyor modules  
LCM

Single-axis robots  
CX

Motor-less single-axis actuator  
Robomity

Compact single-axis robots  
TRANSEVO

Single-axis robots  
FLIP-X

Linear motor single-axis robots  
PHASER

Cartesian robots  
XY-X

SCARA robots  
YK-X

Pick & place robots  
YP-X

CLEAN

CONTROLLER INFORMATION

Arm type

Gantry type

Moving arm type

Pole type

XZ type